

Progressive Brown Swiss Young Sires

Breeder-owned young sires for the purpose of making available Young Sire genetics for purebred Brown Swiss breeders and commercial dairymen. Semen is of high quality and reasonably priced.

2016 Progressive Brown Swiss Young Sires

Northhill Trace Haywire 68149323 138BS5790

Abnormalities: PT DT MT WT Haplotypes: BH1T BH2C

PPR: +138 PTAT: +1.0 (08/17)

PTA: +236m +35f +17p +382NM\$ 63%R (GEN)

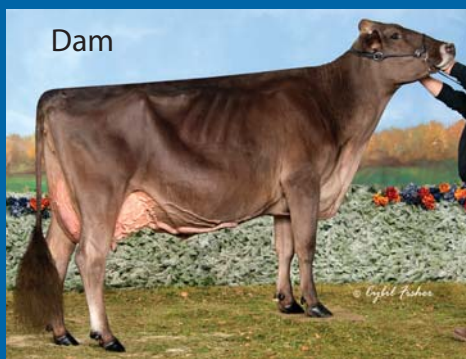
PTA: **PL: +3.9 DPR: +0.5 UDC: +1.8**

Haywire's first few daughters are calving in with exceptional udders!



Northhill Trace Haywire

ALL AMERICAN 4 YR OLD 2015
CIE Double W Em Favor '2E93/E94ms'



Dam

Double W Finnigan 68161848 59BS11

Abnormalities: PT DT MT WT Haplotypes: BH1T BH2T

PPR: +97 PTAT: +0.7 (08/17)

PTA: +775m +27 +28p +171NM\$ 56%R (GEN)

PTA: **PL: -0.9 DPR: -0.8 UDC: +0.4**

A Whiskey son out of an All-American dam!



Progressive's Lineup, past and present, are young sires from proven cow families with production, type, and longevity.

Progressive Sires also sire daughters with award-winning production.

2015 & 2016 National Cow for All Seasons
& National Total Performance Winner
JonLee Secret Langwathby '2E93/94ms'
4-00 300d 40,820m 5.1% 2,080f 3.5% 1,444p

A Cutting Edge Secret ET daughter owned by Dalton, Dillon, & Breanne Freeman, Bremen, IN

Place Your Order Now!

Accepting bull nominations

Contact BSCBA at 608-365-4474, Extension 24



Visit our website for more information:

[www.brownswissusa.com/Progressive Sires](http://www.brownswissusa.com/ProgressiveSires)
Brown Swiss Enterprises' Young Sire Program

Progressive Brown Swiss Young Sires

Lime Rock Drvr Radzmr **TOILE**

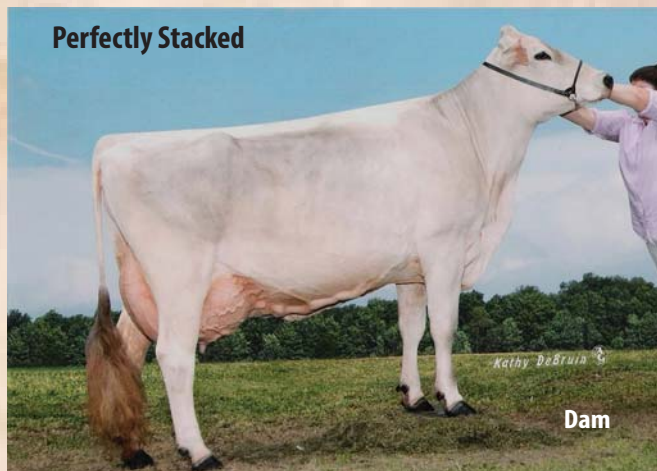
#17t Genomic PPR Bull (4/17)



Abnormalities: PT DC MT WT Haplotypes: BH1T BH2T
138BS5573 PPR: +187 58%R PTAT: -0.2 63%R (08/17)
PTA: +1347m +42f +46p +484NM\$ 62%R (GEN)
PTA PL: +3.5 SCS: +3.02 DPR: +1.4
Sire: Hilltop Acres H Driver ET *TM
Dam: Lime Rock Krkul Radzimir Twin
 3/04 363d 2x 23080 3.9 493 2.9 393 (RIP)
 Owner: Linden Hill Farms, Peoria, IL

On-A-Whim Cadence **PERFECTED ET**

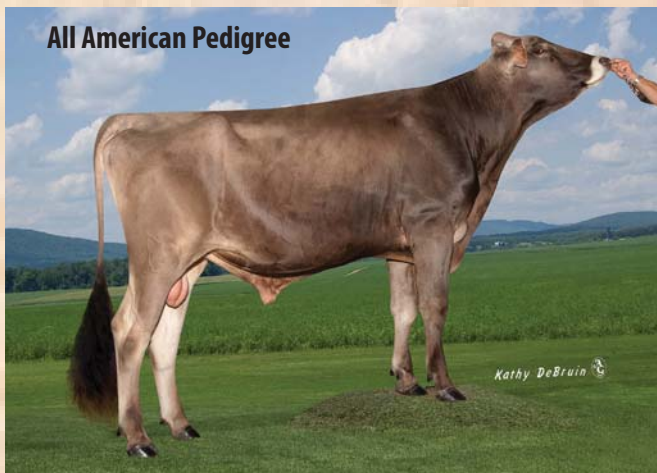
Perfectly Stacked



Abnormalities: PT DT MT WT Haplotypes: BH1T BH2T
91BS5678 PPR: +120 61%R PTAT: +0.7 66%R (08/17)
PTA: +873m +19f +27p +283NM\$ 66%R (GEN)
PTA PL: +3.1 SCS: +2.72 DPR: -1.6
Sire: Shiloh Brookings Cadence ET *TM *Superior Sire *
Dam: Snow Valley Vigor Poohbear '2E92 - E91ms' *Certified*
 6/05 365d 2x 25720 4.4 1143 3.5 895 DHIR
 Owner: Chelsea Hargrave, Heuvelton, NY

Nolandale Pepper **COMANCHE ET**

All American Pedigree



Abnormalities: PT DT MT WT Haplotypes: BH1C BH2T
138BS5497 PPR: +14 61%R PTAT: +1.1 67%R (08/17)
PTA: -237m +5f -11p +8NM\$ 66%R (GEN)
PTA PL: +1.6 SCS: +3.05 DPR: +2.0
Sire: Voelkers Wndt Chilli Pepper *TM
Dam: North Lanes Mailman Cookie '2E93 - E93ms'
 5/06 365d 2x 26060 5.6 1458 3.8 995 DHIR
 All American Sr 3 Yr Old 2007
 Owner: Bill, Chad, Corey, & Emily Nolan, Lexington, IL

Onword P **VISIONARY**

Outcross Genetics



Abnormalities: PT DT MT WT Haplotypes: BH1T BH2T
138BS5709 PPR: +30 58%R PTAT: -0.2 63%R (08/17)
PTA: +410m +2f +9p +53NM\$ 62%R (GEN)
PTA PL: -0.7 SCS: +3.09 DPR: +2.3
Sire: Triangle Acres Pomere ET
Dam: Onword Champ Victoria '3E93 - E94ms' *Certified*
 8/02 365d 2x 37500 3.5 1318 3.3 1249 DHIR
 Grand Champion Iowa State Fair 2007
 Owner: Dennis L. Worden, Oelwein, IA



Place Your Order Now!
 Accepting bull nominations
 Contact BSCBA at 608-365-4474, Extention 24

Visit our website for more information:
[www.brownswissusa.com/Progressive Sires](http://www.brownswissusa.com/Progressive_Sires)
 Brown Swiss Enterprises' Young Sire Program